

WAAS CH <b>86426</b> <b>W21A</b>	APP CRS <b>214°</b>	Rwy Idg THRE Apt Elev	<b>5002</b> <b>1348</b> <b>1348</b>
--	------------------------	-----------------------------	---

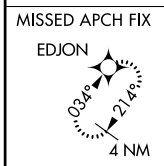
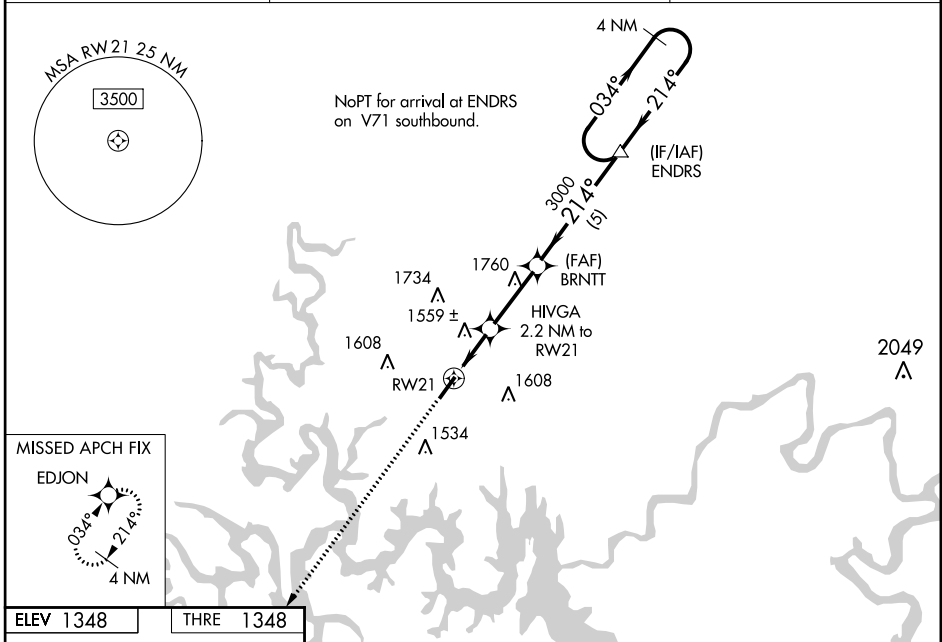
# RNAV (GPS) RWY 21

BRANSON WEST MUNI - EMERSON FIELD (FWB)

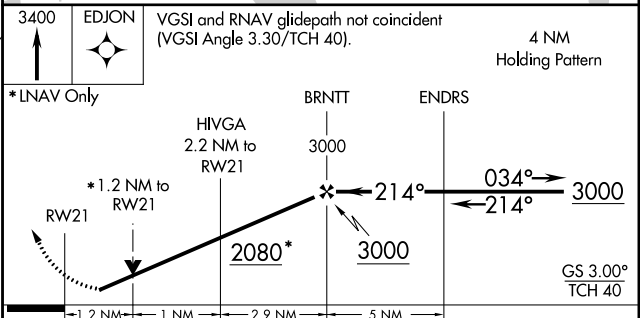
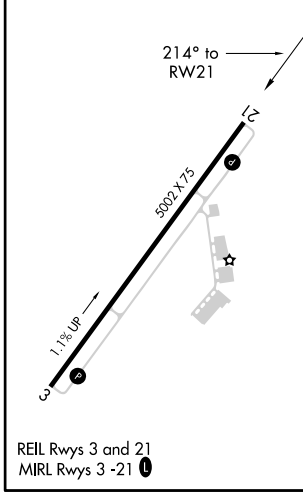
**⚠** DME/DME RNP-0.3 NA. Visibility reduction by helicopters NA. When local altimeter setting not received, use Branson altimeter setting; increase all DA 39 feet and all MDA 40 feet; increase LPV Cat A/B visibility to 1 mile and LNAV/VNAV Cat A/B visibility to 1 ¼. For uncompensated Baro-VNAV systems, LNAV/VNAV NA below -17°C (2°F) or above 54°C (130°F). VDP and Baro-VNAV NA when using Branson altimeter setting.

**⚠** MISSED APPROACH: Climb to 3400 direct EDJON and hold.

AWOS-3 <b>119.725</b>	SPRINGFIELD APP CON <b>126.35</b>	UNICOM <b>123.0</b> (CTAF) <b>0</b>
--------------------------	--------------------------------------	--



ELEV <b>1348</b>	THRE <b>1348</b>
------------------	------------------



CATEGORY	A	B	C	D
LPV DA	1598-1	250(300-1)		NA
LNAV/VNAV DA	1832-1 ½	484(500-1 ½)		NA
LNAV MDA	1800-1	452(500-1)		NA
CIRCLING	1900-1	552(600-1)		NA

NC-3, 18 SEP 2014 to 16 OCT 2014

NC-3, 18 SEP 2014 to 16 OCT 2014