

WAAS CH <b>72726</b> <b>W03A</b>	APP CRS <b>034°</b>	Rwy Idg <b>5002</b> THRE <b>1291</b> Apt Elev <b>1348</b>
--	------------------------	---

# RNAV (GPS) RWY 3

BRANSON WEST MUNI - EMERSON FIELD (FWB)

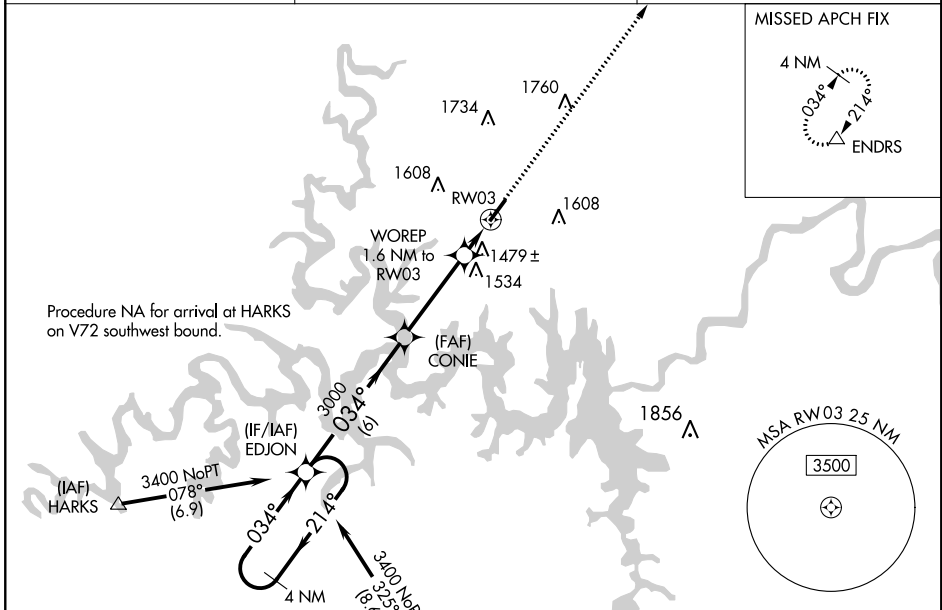
**⚠ NA** DME/DME RNP-0.3 NA. When local altimeter setting not received, use Branson altimeter setting; increase all DA 39 feet and all MDA 40 feet; increase LNAV/VNAV Cat A/B visibility to 1 7/8 mile. For uncompensated Baro-VNAV systems, LNAV/VNAV NA below -17°C (2°F) or above 54°C (130°F). Baro-VNAV NA when using Branson altimeter setting.

MISSED APPROACH: Climb to 3000 direct ENDRS and hold.

AWOS-3  
**119.725**

SPRINGFIELD APP CON  
**126.35**

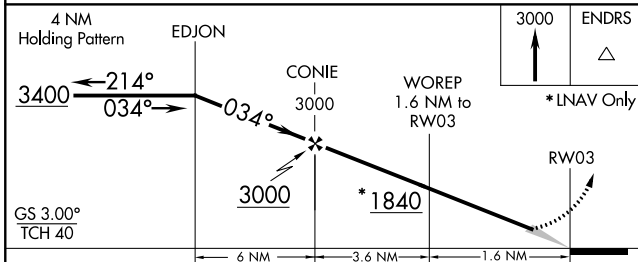
UNICOM  
**123.0 (CTAF)** **0**



NC-3, 18 SEP 2014 to 16 OCT 2014

NC-3, 18 SEP 2014 to 16 OCT 2014

ELEV 1348 THRE 1291



CATEGORY	A	B	C	D
LPV DA	1491-1	200(200-1)		NA
LNAV/VNAV DA	1796-1¾	505(500-1¾)		NA
LNAV MDA	1740-1	449(400-1)		NA
CIRCLING	1900-1	552(600-1)		NA

